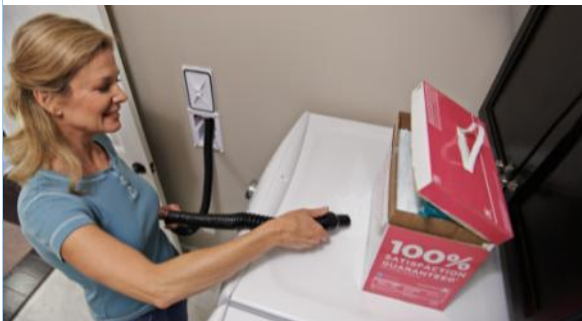




# ELEMENT 2017 Product Catalog



*Central Vacuum Products for  
Convenient Cleaning and Healthier Living*

## TABLE OF CONTENTS

CATEGORY	PAGES
<b>Power Units.....</b>	<b>1-3</b>
<i>Permanent Cloth Filter Units, Disposable Bag Units, Garage Vacuums, Separator Unit and Wet/Dry Separator</i>	
<b>Cleaning Kits and Sets.....</b>	<b>4-15</b>
<i>Turbine Kits, Bare Floor Kits, Electric Kits, Cleaning Kits, Attachment Kits and Hide-A-Hose Kits and Sets</i>	
<b>Power Brushes.....</b>	<b>16-17</b>
<i>Turbine, Electric and VacuBumpers</i>	
<b>Hoses and Hose Socks.....</b>	<b>18-19</b>
<i>Turbine, Electric and Standard Hoses and Hose Socks</i>	
<b>Hose Management Accessories.....</b>	<b>20-24</b>
<i>Vroom, Spot, WallyFlex and Hide-A-Hose Installation Kits, Components, Hoses, Handles and Demonstration Components</i>	
<b>Attachments, Wands and Racks.....</b>	<b>25-28</b>
<i>Tools, Wands, Caddies, Racks and Hangers</i>	
<b>Inlet Valves, Kits and Accessories.....</b>	<b>29-32</b>
<i>Universal, ElectraValve and SuperValve Inlet Valves, Installation Kits, Components and Automatic Dustpans</i>	
<b>Installation Components.....</b>	<b>33-36</b>
<i>Fittings, Mufflers, Vent Caps, Service Items, PVC Tubing and Hangers, Low-Voltage Wire, Adhesive and Metal Tubing and Components</i>	
<b>Replacement Parts and Accessories.....</b>	<b>37-41</b>
<i>Replacement Motors, Motor Brushes, PC Boards, Circuit Protectors, Dirt Canisters, Belts, Filters, Bags, Tornado Cloths, and Valve and Hose Parts</i>	

## Permanent Cloth Filter Power Units



Home Size:  
up to  
3,500 sq. ft.

### Model 1300 Power Unit 9350

Dirt Capacity: 6 gallons  
Single Motor: 5.7" dia., 120V  
Max/Avg Amps: 14.0/11.3  
Max Air Watts: 520  
Sealed Vacuum: 125"  
CFM Max.: 121  
Sound Level: 66.7 dBA  
Carbon Capture Filter: No  
Shipping Wt.: 30 lbs.



Home Size:  
up to  
7,000 sq. ft.

### Model 1700 Power Unit 9355

Dirt Capacity: 6 gallons  
Single Motor: 5.7" dia., 120V  
Max/Avg Amps: 15.7/12.4  
Max Air Watts: 575  
Sealed Vacuum: 141"  
CFM Max.: 124  
Sound Level: 64.7 dBA  
Carbon Capture Filter: No  
Shipping Wt.: 32 lbs.



Home Size:  
up to  
12,000 sq. ft.

### Model 2300 Power Unit 9360

Dirt Capacity: 6 gallons  
Single Motor: 8.4" dia., 120V  
Max/Avg Amps: 14.7/12.2  
Max Air Watts: 707  
Sealed Vacuum: 151"  
CFM Max.: 136  
Sound Level: 67.9 dBA  
Carbon Capture Filter: Yes  
Shipping Wt.: 30 lbs.

*Shipping weights are rounded up to the nearest pound.*

## Disposable Bag (DB) Power Units with Dual Intake



Home Size:  
up to  
3,000 sq. ft.

### DB3000 Power Unit 10020

Dirt Capacity: 4 gallons  
Single Motor: 4.8" dia., 120V  
Max/Avg Amps: 13.4/10.6  
Max Air Watts: 522  
Sealed Vacuum: 129"  
CFM Max.: 95  
Sound Level: 59.7 dBA  
Carbon Capture Filter: No  
Shipping Wt.: 35 lbs.



Home Size:  
up to  
5,000 sq. ft.

### DB5000 Power Unit 9640

Dirt Capacity: 6 gallons  
Single Motor: 5.7" dia., 120V  
Max/Avg Amps: 13.2/10.5  
Max Air Watts: 560  
Sealed Vacuum: 133"  
CFM Max.: 123  
Sound Level: 62.6 dBA  
Carbon Capture Filter: No  
Shipping Wt.: 40 lbs.



Home Size:  
up to  
7,000 sq. ft.

### DB7000 Power Unit 9645

Dirt Capacity: 6 gallons  
Single Motor: 5.7" dia., 120V  
Max/Avg Amps: 14.8/12.1  
Max Air Watts: 601  
Sealed Vacuum: 158"  
CFM Max.: 110  
Sound Level: 67 dBA  
Carbon Capture Filter: Yes  
Shipping Wt.: 40 lbs.



Home Size:  
up to  
12,000 sq. ft.

### DB8000 Power Unit 10040

Dirt Capacity: 6 gallons  
Single Motor: 8.4" dia., 120V  
Max/Avg Amps: 14.7/12.2  
Max Air Watts: 707  
Sealed Vacuum: 151"  
CFM Max.: 136  
Sound Level: 67.9 dBA  
Carbon Capture Filter: Yes  
Shipping Wt.: 40 lbs.



Home Size:  
up to  
22,000 sq. ft.

### DB9000 Power Unit 9800

Dirt Capacity: 6 gallons  
Dual Motor: 5.7" dia., 240V  
Max/Avg Amps: 13.8/11  
Max Air Watts: 903  
Sealed Vacuum: 208"  
CFM Max.: 122  
Sound Level: 70 dBa  
Carbon Capture Filter: Yes  
Shipping Wt.: 52 lbs.

*Shipping weights are rounded up to the nearest pound.*



## Garage Vacuums



**Vroom Garage Vac  
Surface Mount  
with 40' Hose**  
**GH-120**

Shipping Wt.: 18 lbs.



**Vroom Garage Vac  
Flush Mount  
with 40' Hose**  
**GF-120**

Shipping Wt.: 18 lbs.



For  
areas up  
to 2,500  
sq. ft



**Vroom Garage Vac Ultra System**  
**9460**

*Includes:*

- Filtered Cyclonic Power Unit
- Vroom 24 with Universal Bracket and Ceiling Bracket for mounting overhead
- Premium Crevice Tool, Upholstery Tool, Dusting Brush, 10" Bare Floor Brush and Mesh Bag Tool Caddy
- 1-pc. Adjustable Wand extends reach up to 38"

## Separator

*Separators are strictly used for dirt collection and filtration (no motor, PC board or circuit protector). Must be used with a power unit (any brand or model). Mostly used in commercial environments that clean up lots of dust or hair.*



**Disposable Bag Separator**  
**9687**

Dirt Collection  
Capacity: 6 gallons  
Shipping Wt.: 31 lbs.

## Wet/Dry Separator



**Stainless Steel Wet/Dry  
Separator Tank with  
Removable 3-Wheel  
Trolley (inline separator)**  
**7852**

Shipping Wt.: 11 lbs.

**WetVac  
Attachment  
Kit**  
**7853**

*Includes:*

- 24' Flexible 1-1/4" Hose
- 6' Hose (connects WetVac to valve)
- 2-piece Plastic Wand Set
- 10" Combo Tool with squeegee
- Dusting, Upholstery and Crevice tools
- 6" Connector (connects hose cuff to WetVac intake)

Shipping Wt.: 8 lbs.



**Stainless Steel Wet/Dry Separator Tank with Removable  
3-Wheel Trolley and Attachment Kit**



**7869**

*Includes all items in  
#7852 and #7853  
(above)*

Shipping Wt.: 19 lbs.

*Shipping weights are rounded up to the nearest pound.*

## TurboCat Zoom Turbine Kits



### E-Class CleanTeam™ Ultra Kit includes:

- TurboCat Zoom Powerhead (Platinum)
- e-Z Grip Hose with Hose Sock (30' or 35')
- One-Piece Adjustable Wand
- Premium 12" Turn & Clean Brush, 12" Rug Tool, Crevice Tool, Dusting Brush and Upholstery Tool
- VacPac Attachment Caddy and Wire Hose Rack

Shipping Wt.: 23 lbs.

#### For Universal Valves

- 8892** with 30' Hose  
**8892-35** with 35' Hose



### E-Class CleanTeam™ Deluxe Kit includes:

- TurboCat Zoom Powerhead (Platinum)
- e-Z Grip Hose with or without Hose Sock (30' or 35')
- One-Piece Adjustable Wand
- Premium 12" Turn & Clean Brush, Crevice Tool, Dusting Brush and Upholstery Tool
- VacPac Attachment Caddy and Wire Hose Rack

Shipping Wt.: 22 lbs.

#### For Universal Valves

- 8884** with 30' Hose  
**8884-HS** with 30' Hose & Hose Sock  
**8884-35** with 35' Hose  
**8884-35-HS** with 35' Hose & Hose Sock



Universal Hose  
Metal Band-Style  
Hose End

Shipping weights are rounded up to the nearest pound.

## TurboCat Turbine Kits



### **TurboTeam® Deluxe Cleaning Kit** *includes:*

- TurboCat Turbine Powerhead (Gray or Black)
- TurboGrip Hose with or without Hose Sock (30' or 35')
- One-Piece Adjustable Wand
- Premium 12" Bare Floor Brush, Crevice Tool, Dusting Brush and Upholstery Tools
- Vinyl Bag Attachment Caddy and Wire Hose Rack

Shipping Wt.: 22 lbs.

For Universal Valves

**with Gray TurboCat**

**7402-I-NL**

with 30' Hose

**7402-I-HS-NL**

with 30' Hose & Hose Sock

**7402-35-I-NL**

with 35' Hose

**7402-35-I-HS-NL**

with 35' Hose & Hose Sock

**with Black TurboCat**

**7402-B**

with 30' Hose

**7402-B-HS**

with 30' Hose & Hose Sock

**7402-35-B**

with 35' Hose

**7402-35-B-HS**

with 35' Hose & Hose Sock



### **Performance TurboTeam® Cleaning Kit** *includes:*

*includes:*

- TurboCat Turbine Powerhead (Gray or Black)
- 30' Crushproof Hose – no on/off, works with Universal Valves
- Two-Piece Button-Lock Wand Set
- 12" Bare Floor Brush, Crevice Tool, Dusting Brush and Upholstery Tool with Slip-On Brush
- Vinyl Bag Caddy and Wire Hose Rack

Shipping Wt.: 22 lbs.

For Universal Valves

**with Gray TurboCat**

**8281-I-NL**

**with Black TurboCat**

**8281-B**



Universal Hose  
Metal Band-Style  
Hose End

*All shipping weights are rounded up to the nearest pound.*

## Bare Floor Kits



### Deluxe Bare Floor E-Class Kit includes:

- e-Z Grip Hose with Hose Sock (30' or 35')
- One-Piece Adjustable Wand
- Premium 12" Bare Floor Brush, 10" Bare Floor Brush, 12" Rug Tool and Dust Mop Tool
- Premium Crevice, Dusting and Upholstery Tools
- VacPac Attachment Caddy and Wire Hose Rack

Shipping Wt: 14 lbs.

#### For Universal Valves

**8902** with 30' Hose

**8902-35** with 35' Hose



### Deluxe Bare Floor Care Kit includes:

- 30' TurboGrip Hose with Hose Sock
- One-Piece Adjustable Wand
- Premium 12" Bare Floor Brush, 10" Bare Floor Brush, 12" Rug Tool and Dust Mop Tool
- Premium Crevice, Dusting and Upholstery Tools
- Vinyl Bag Caddy and Wire Hose Rack

Shipping Wt: 14 lbs.

#### For Universal Valves

**8321-NL**



Universal Hose  
Metal Band-Style  
Hose End

### Bare Floor E-Class Kit includes:

- e-Z Grip Hose with or without Hose Sock (30' or 35')
- One-Piece Adjustable Wand
- Premium 12" Bare Floor Brush, 10" Bare Floor Brush and 12" Rug Tool
- Premium Crevice, Dusting and Upholstery Tools
- VacPac Attachment Caddy and Wire Hose Rack

Shipping Wt: 14 lbs.

#### For Universal Valves

**8900** with 30' Hose

**8900-HS** with 30' Hose & Hose Sock

**8900-35** with 35' Hose

**8900-35-HS** with 35' Hose & Hose Sock



### Bare Floor Care Kit includes:

- 30' TurboGrip Hose with or without Hose Sock
- One-Piece Adjustable Wand
- Premium 12" Bare Floor Brush, 10" Bare Floor Brush and 12" Rug Tool
- Premium Crevice, Dusting and Upholstery Tools
- Vinyl Bag Caddy and Wire Hose Rack

Shipping Wt: 14 lbs.

#### For Universal Valves

**7032-NL** with 30' Hose

**7032-HS-NL** with 30' Hose & Hose Sock

Shipping weights are rounded up to the nearest pound.



## Electric Kits



### Acclaim15 Electric Kit *includes:*

- Acclaim15 Electric Powerhead
- Electric Hose with or without Hose Sock (30' or 35')
- Integrated Telescopic Acclaim Chrome Wand
- One-Piece Adjustable Wand
- Premium 12" Turn & Clean Brush, Crevice Tool, Dusting Brush and Upholstery Tool
- VacPac Attachment Caddy and Wire Hose Rack

Shipping Wt.: 21 lbs.



### Acclaim12 Electric Kit *includes:*

- Acclaim12 Electric Powerhead
- Electric Hose with or without Hose Sock (30' or 35')
- Integrated Telescopic Acclaim Chrome Wand
- One-Piece Adjustable Wand
- Premium 12" Turn & Clean Brush, Crevice Tool, Dusting Brush and Upholstery Tool
- VacPac Attachment Caddy and Wire Hose Rack

Shipping Wt.: 21 lbs.

#### For Direct Connect Valves

<b>9865-DC</b>	with 30' Hose
<b>9865-DC-HS</b>	with 30' Hose & Hose Sock
<b>9865-DC-35</b>	with 35' Hose
<b>9865-DC-35-HS</b>	with 35' Hose & Hose Sock

#### For Universal Valves

<b>9865-UNIV</b>	with 30' Hose
<b>9865-UNIV-HS</b>	with 30' Hose & Hose Sock
<b>9865-UNIV-35</b>	with 35' Hose
<b>9865-UNIV-35-HS</b>	with 35' Hose & Hose Sock

#### For Direct Connect or Universal Valves

<b>9865-DUAL</b>	with 30' Hose
<b>9865-DUAL-HS</b>	with 30' Hose & Hose Sock
<b>9865-DUAL-35</b>	with 35' Hose
<b>9865-DUAL-35-HS</b>	with 35' Hose & Hose Sock



Direct Connect Hose with 120V Pin End and Low-Voltage Ring



Universal Electric Hose with 120V Pigtail (6') and Low-Voltage Ring



Direct Connect Dual-style Low-Voltage Electric Hose with 120V Pin End and Pigtail (6') Conversion Kit

#### For Direct Connect Valves

<b>9860-DC</b>	with 30' Hose
<b>9860-DC-HS</b>	with 30' Hose & Hose Sock
<b>9860-DC-35</b>	with 35' Hose
<b>9860-DC-35-HS</b>	with 35' Hose & Hose Sock

#### For Universal Valves

<b>9860-UNIV</b>	with 30' Hose
<b>9860-UNIV-HS</b>	with 30' Hose & Hose Sock
<b>9860-UNIV-35</b>	with 35' Hose
<b>9860-UNIV-35-HS</b>	with 35' Hose & Hose Sock

#### For Direct Connect or Universal Valves

<b>9860-DUAL</b>	with 30' Hose
<b>9860-DUAL-HS</b>	with 30' Hose & Hose Sock
<b>9860-DUAL-35</b>	with 35' Hose
<b>9860-DUAL-35-HS</b>	with 35' Hose & Hose Sock

Shipping weights are rounded up to the nearest pound.

## Electric Kits



### Edge Electric Kit includes:

- Edge Electric Powerhead
- Electric Hose with or without Hose Sock (30' or 35')
- Integrated Telescopic Chrome Wand
- One-Piece Adjustable Wand
- Premium 12" Turn & Clean Brush, Crevice Tool, Dusting Brush and Upholstery Tool
- VacPac Attachment Caddy and Wire Hose Rack

Shipping Wt.: 21 lbs.



*The Edge Soft-Clean Powerhead is designed specifically for 80-100 ounce soft/textured/silk carpets.*

### Edge Soft-Clean Electric Kit includes:

- Edge Soft-Clean Electric Powerhead
- 30' Electric Hose with or without Hose Sock
- Integrated Telescopic Chrome Wand
- One-Piece Adjustable Wand
- Premium 12" Turn & Clean Brush, Crevice Tool, Dusting Brush and Upholstery Tool
- VacPac Attachment Caddy and Wire Hose Rack

Shipping Wt.: 21 lbs.

### For Direct Connect Valves

- 9205-DC** with 30' Hose  
**9205-DC-HS** with 30' Hose & Hose Sock  
**9205-DC-35** with 35' Hose  
**9205-DC-35-HS** with 35' Hose & Hose Sock

### For Universal Valves

- 9205-UNIV** with 30' Hose  
**9205-UNIV-HS** with 30' Hose & Hose Sock  
**9205-UNIV-35** with 35' Hose  
**9205-UNIV-35-HS** with 35' Hose & Hose Sock

### For Direct Connect or Universal Valves

- 9205-DUAL** with 30' Hose  
**9205-DUAL-HS** with 30' Hose & Hose Sock  
**9205-DUAL-35** with 35' Hose  
**9205-DUAL-35-HS** with 35' Hose & Hose Sock



Direct Connect Hose with 120V Pin End and Low-Voltage Ring



Universal Electric Hose with 120V Pigtail (6') and Low-Voltage Ring



Direct Connect Dual-style Low-Voltage Electric Hose with 120V Pin End and Pigtail (6') Conversion Kit

### For Direct Connect Valves

- 9745-DC** with 30' Hose  
**9745-DC-HS** with 30' Hose & Hose Sock

### For Universal Valves

- 9745-UNIV** with 30' Hose  
**9745-UNIV-HS** with 30' Hose & Hose Sock

### For Direct Connect or Universal Valves

- 9745-DUAL** with 30' Hose  
**9745-DUAL-HS** with 30' Hose & Hose Sock

Shipping weights are rounded up to the nearest pound.

## Electric Kits



### EG1400 Deluxe Electric Kit *includes:*

- EG1400 Electric Powerhead
- 30' Electric Hose with or without Hose Sock
- Two-Piece Chrome Wand with Cord Management
- One-Piece Adjustable Wand
- Premium 12" Bare Floor Brush, Crevice Tool, Dusting Brush and Upholstery Tool
- VacPac Attachment Caddy and Wire Hose Rack

Shipping Wt.: 21 lbs.



### EG1400 Standard Electric Kit *includes:*

- EG1400 Electric Powerhead
- 30' Electric Hose with or without Hose Sock
- Two-Piece Chrome Wand with Cord Management
- Two-Piece Button-Locking Wand
- 10" Bare Floor Brush, Crevice Tool, Dusting Brush and Upholstery Tool with Slip-On Brush
- Vinyl Attachment Caddy and Wire Hose Rack

Shipping Wt.: 21 lbs.

#### For Direct Connect Valves

**9433-DC** with 30' Hose

**9433-DC-HS** with 30' Hose & Hose Sock



Direct Connect Hose with 120V Pin End and Low-Voltage Ring

#### For Direct Connect Valves

**9434-DC** with 30' Hose

**9434-DC-HS** with 30' Hose & Hose Sock



Universal Electric Hose with 120V Pigtail (6') and Low-Voltage Ring

#### For Universal Valves

**9434-UNIV** with 30' Hose

**9434-UNIV-HS** with 30' Hose & Hose Sock

#### For Universal Valves

**9433-UNIV** with 30' Hose

**9433-UNIV-HS** with 30' Hose & Hose Sock



Direct Connect Dual-style Low-Voltage Electric Hose with 120V Pin End and Pigtail (6') Conversion Kit

#### For Direct Connect or Universal Valves

**9434-DUAL** with 30' Hose

**9434-DUAL-HS** with 30' Hose & Hose Sock

#### For Direct Connect or Universal Valves

**9433-DUAL** with 30' Hose

**9433-DUAL-HS** with 30' Hose & Hose Sock

Shipping weights are rounded up to the nearest pound.

## Electric Kits



### **Sterling Plus Electric Kit** *includes:*

- Sterling Plus Electric Powerhead with Quick Disconnect
- 30' Electric Hose with or without a Hose Sock
- Two-Piece Chrome Wand with Cord Management
- One-Piece Adjustable Wand
- Premium 12" Bare Floor Brush, Crevice Tool, Dusting Brush and Upholstery Tool
- Vinyl Attachment Caddy and Wire Hose Rack

Shipping Wt.: 21 lbs.



### **EG1200 Electra Electric Kits** *includes:*

- EG1200 Electric Powerhead
- 30' Electric Hose with or without Hose Sock
- Two-Piece Chrome Wand with Cord Management
- Two-Piece Button-Locking Wand
- Premium 12" Bare Floor Brush, Crevice Tool, Dusting Brush and Upholstery Tool
- Vinyl Attachment Caddy and Wire Hose Rack

Shipping Wt.: 21 lbs.

#### For Direct Connect Valves

**9776-DC** with 30' Hose

**9776-DC-HS** with 30' Hose & Hose Sock

#### For Universal Valves

**9776-UNIV** with 30' Hose

**9776-UNIV-HS** with 30' Hose & Hose Sock

#### For Direct Connect or Universal Valves

**9776-DUAL** with 30' Hose

**9776-DUAL-HS** with 30' Hose & Hose Sock



Direct Connect Hose with 120V Pin End and Low-Voltage Ring



Universal Electric Hose with 120V Pigtail (6') and Low-Voltage Ring



Direct Connect Dual-style Low-Voltage Electric Hose with 120V Pin End and Pigtail (6') Conversion Kit

#### For Direct Connect Valves

**8594-DC** with 30' Hose

**8594-DC-HS** with 30' Hose & Hose Sock

#### For Universal Valves

**8594-UNIV** with 30' Hose

**8594-UNIV-HS** with 30' Hose & Hose Sock

#### For Direct Connect or Universal Valves

**8594-DUAL** with 30' Hose

**8594-DUAL-HS** with 30' Hose & Hose Sock

Shipping weights are rounded up to the nearest pound.



## Electric Kits



### EG1200 Performance Electric Kit *includes:*

- EG1200 Electric Powerhead
- 30' Electric Hose with or without Hose Sock
- Two-Piece Chrome Wand with Cord Management
- Two-Piece Friction-Fit Plastic Wand
- 10" Bare Floor Brush, Crevice Tool, Dusting Brush and Upholstery Tool with Slip-On Brush
- Mesh Bag Attachment Caddy and Economy Wire Hose Rack

Shipping Wt.: 21 lbs.



### EG1200 Standard Electric Kit *includes:*

- EG1200 Electric Powerhead
- 30' Spiral Electric Hose with or without Hose Sock
- Two-Piece Chrome Wand with Cord Management
- Two-Piece Friction-Fit Plastic Wand
- 10" Bare Floor Brush, Crevice Tool, Dusting Brush and Upholstery Tool with Slip-On Brush
- Mesh Bag Attachment Caddy and Wire Hose Rack

Shipping Wt.: 21 lbs.

#### For Direct Connect Valves

**8593-DC** with 30' Hose

**8593-DC-HS** with 30' Hose & Hose Sock

#### For Universal Valves

**8593-UNIV** with 30' Hose

**8593-UNIV-HS** with 30' Hose & Hose Sock

#### For Direct Connect or Universal Valves

**8593-DUAL** with 30' Hose

**8593-DUAL-HS** with 30' Hose & Hose Sock



Direct Connect Hose with 120V Pin End and Low-Voltage Ring



Universal Electric Hose with 120V Pigtail (6') and Low-Voltage Ring



Direct Connect Dual-style Low-Voltage Electric Hose with 120V Pin End and Pigtail (6') Conversion Kit

#### For Direct Connect Valves

**8592-DC** with 30' Hose

**8592-DC-HS** with 30' Hose & Hose Sock

#### For Universal Valves

**8592-UNIV** with 30' Hose

**8592-UNIV-HS** with 30' Hose & Hose Sock

#### For Direct Connect or Universal Valves

**8592-DUAL** with 30' Hose

**8592-DUAL-HS** with 30' Hose & Hose Sock

Shipping weights are rounded up to the nearest pound.

## Electric Kits



### Sterling Electric Kit *includes:*

- Sterling Electric Powerhead with Quick Disconnect
- 30' Electric Hose with or without a Hose Sock
- Integrated Adjustable Chrome Wand
- One-Piece Adjustable Wand
- Premium 12" Turn & Clean Brush, Crevice Tool, Dusting Brush and Upholstery Tool
- Clip-on Attachment Caddy and Wire Hose Rack

Shipping Wt.: 21 lbs.

### For Direct Connect Valves

**9541-DC** with 30' Hose

**9541-DC-HS** with 30' Hose & Hose Sock

### For Universal Valves

**9541-UNIV** with 30' Hose

**9541-UNIV-HS** with 30' Hose & Hose Sock

### For Direct Connect or Universal Valves

**9541-DUAL** with 30' Hose

**9541-DUAL-HS** with 30' Hose & Hose Sock



Direct Connect Hose with 120V Pin End and Low-Voltage Ring



Universal Electric Hose with 120V Pigtail (6') and Low-Voltage Ring



Direct Connect Dual-style Low-Voltage Electric Hose with 120V Pin End and Pigtail (6') Conversion Kit

## Cleaning Kits and Attachment Sets



### Garage & Car Care Kit *includes:*

- 30' Ultralite Hose
- Two-Piece Plastic Friction-Fit Wand
- 10" Bare Floor Brush
- Crevice Tool, Dusting Brush and Upholstery Tool with Slip-On Brush
- Mesh Bag Caddy and Wire Hose Rack

Shipping Wt.: 8 lbs.

**7711-G** with 30' Hose

**7711-35-G** with 35' Hose

**7711-40-G** with 40' Hose

**7711-50-G** with 50' Hose



### Car Care Attachment Kit –

### No Wand or Floor Brush *includes:*

- 30' Crushproof Garage Hose, 1-1/4"
- Crevice Tool, Dusting Brush and Upholstery Tool with Slip-On Brush
- Vinyl Bag Caddy and Wire Hose Rack

Shipping Wt.: 8 lbs.

**9219-B**

*Shipping weights are rounded up to the nearest pound.*

## Cleaning Kits and Attachment Sets



### Cleaning Kit with Vinyl Bag Caddy

*includes:*

- 30' Ultralite Hose
- Two-Piece Button-Lock Wand
- 12" Bare Floor Brush and 12" Rug Tool
- Crevice Tool, Dusting Brush and Upholstery Tool with Slip-On Brush
- Vinyl Bag Caddy and Wire Hose Rack

Shipping Wt.: 11 lbs.

**6410-PNL**



Metal Band-Style  
Hose End for  
Universal Valves



### Premium Attachment Set with Adjustable Wand and Mesh Bag Caddy

*includes:*

- One-Piece Adjustable Wand
- 12" Bare Floor Brush
- 12" Rug Tool
- Premium Crevice Tool, Dusting Brush and Upholstery Tool
- Mesh Bag Caddy

Shipping Wt.: 5 lbs.

**7850-NL**



### Standard Tool Kit *includes:*

- Two-Piece Button-Lock Wand
- 12" Bare Floor Brush
- Crevice Tool, Dusting Brush, and Upholstery Tool with Slip-On Brush
- Vinyl Bag Caddy

Shipping Wt.: 11 lbs.

**8279-GNL**



### Attachment Set with Mesh Bag Caddy

*includes:*

- Two-Piece Button-Lock Wand
- 12" Bare Floor Brush
- 12" Rug Tool
- Crevice Tool, Dusting Brush and Upholstery Tool with Slip-On Brush
- Mesh Bag Caddy

Shipping Wt.: 5 lbs.

**1287-NL**



### Replacement Tool Set with Mesh Bag Caddy (no Wands)

*includes:*

- 12" Bare Floor Brush
- 12" Rug Tool
- Crevice Tool, Dusting Brush and Upholstery Tool with Slip-On Brush
- Mesh Bag Caddy

Shipping Wt.: 4 lbs.

**7910-NL**

*Shipping weights are rounded up to the nearest pound.*

## Hide-A-Hose Cleaning Kits and Sets

*Hide-A-Hose kits and components may be ordered by authorized Hide-A-Hose dealers only.  
To offer Hide-A-Hose, call customer service to see if it's available in your sales area.*



### Premium Accessory Kit

*includes:*

- Platinum Turbocat Zoom Powerhead
- Adjustable Chrome Wand
- RugRat Handheld Powerhead
- Premium 12" Bare Floor Brush, 12" Rug Tool, Crevice Tool, Dusting Brush and Upholstery Tool
- VacPac Caddy with Wire Hanger

Shipping Wt.: 10 lbs.

**8839-HH**



### Select Accessory Kit

*includes:*

- Platinum Turbocat Zoom Powerhead
- Adjustable Chrome Wand
- Premium 12" Bare Floor Brush, Crevice Tool, Dusting Brush and Upholstery Tool
- VacPac Caddy with Wire Hanger

Shipping Wt.: 10 lbs.

**8737-HH**



### Select Plus Accessory Kit with Non-RF Handle

*includes:*

- Platinum TurboCat Zoom Powerhead
- TurboCat Zoom Powerhead
- Handle
- Adjustable Chrome Wand with Wand Holder
- Premium 12" Bare Floor Brush, Crevice Tool, Dusting Brush and Upholstery Tool
- VacPac Caddy with Wire Hanger

Shipping Wt.: 10 lbs.

**9284-HH**



### Deluxe Accessory Kit

*includes:*

- Platinum Turbocat Zoom Powerhead
- Adjustable Chrome Wand
- Premium 12" Bare Floor Brush, Crevice Tool, Dusting Brush and Upholstery Tool
- Clip-on Caddy

Shipping Wt.: 9 lbs.

**8719-HH**

*Shipping weights are rounded up to the nearest pound.*



## Hide-A-Hose Cleaning Kits and Sets



### Performance Accessory Kit

*includes:*

- Black Turbocat Powerhead
- Adjustable Chrome Wand
- Premium 12" Bare Floor Brush, Crevice Tool, Dusting Brush and Upholstery Tool
- Clip-on Caddy

Shipping Wt.: 9 lbs.

**8693-HH**



### Bare Floor Kit *includes:*

- Adjustable Chrome Wand
- Dust Mop Tool
- Premium 12" Bare Floor Brush, 12" Rug Tool, Crevice Tool, Dusting Brush & Upholstery Tool
- VacPac Caddy with Wire Hanger

Shipping Wt.: 5 lbs.

**8717-HH**



### Deluxe Accessory Kit with Non-RF Handle (no remote control)

*includes:*

- Platinum Turbocat Zoom Powerhead
- Non-RF (Radio Frequency) Handle
- Adjustable Chrome Wand
- Premium 12" Bare Floor Brush, Crevice Tool, Dusting Brush and Upholstery Tool
- Clip-on Caddy

Shipping Wt.: 6 lbs.

**8801-HH**



### Hide-A-Hose Garage Kit

*Includes:*

- Hose Assembly, no hose sock
- Garage Handle
- Adjustable Plastic Wand
- 10" Bare Floor Brush, Crevice Tool, Dusting Brush and Upholstery Tool
- Mesh Bag Caddy and Wall Hanger

Shipping Wt.: 6 lbs.

**HS302161 with 30' Hose**

**HS302162 with 40' Hose**

**HS302163 with 50' Hose**

*Hide-A-Hose kits and components may be ordered by authorized Hide-A-Hose dealers only.  
To offer Hide-A-Hose, call customer service to see if it's available in your sales area.*

*Shipping weights are rounded up to the nearest pound.*

## Turbine Powerheads, Power Brushes and VacuBumpers



**TurboCat Zoom  
Turbine Powerhead**

**8702** Platinum  
Shipping Wt.: 6 lbs.



**TurboCat Zoom ST  
Turbine Powerhead**

**8708** Platinum  
Shipping Wt.: 6 lbs.



**TurboCat Turbine  
Powerhead**

**8695** Gray/Indigo  
Shipping Wt.: 6 lbs.



**TurboCat Turbine  
Powerhead**

**8695-BG** Black/Gray  
Shipping Wt.: 6 lbs.



**RugRat Turbine  
Handheld Power Brush**

**6971** Gray  
**6972-BG** Black  
Shipping Wt.: 2 lbs.



**VacuBumper for  
TurboCat and Zoom  
Powerheads**

**9538**  
Shipping Wt.: 2 lbs.

*Shipping weights are rounded up to the nearest pound.*

## Electric Powerheads, Power Brushes and VacuBumpers



### Acclaim15 Electric Powerhead – No Wand

*If wand is needed, order #9845-G*

**9866-01**

Shipping Wt.: 6 lbs.



### Acclaim12 Electric Powerhead – No Wand

*If wand is needed, order #9845-G*

**9861-01**

Shipping Wt.: 5 lbs.



### Edge Electric Powerhead and Wand

**9190**

Shipping Wt.: 10 lbs.



### Edge Soft Clean Electric Powerhead and Wand

**9735**

Shipping Wt.: 10 lbs.



### EG1400 Electric Powerhead and Wand

**9315**

Shipping Wt.: 6 lbs.



### Sterling Plus Quick-Disconnect Electric Powerhead and Wand

**9656**

Shipping Wt.: 10 lbs.



### EG1200 Electric Powerhead and Wand

**8286**

Shipping Wt.: 10 lbs.



### Sterling Quick-Disconnect Electric Powerhead and Wand

**9536**

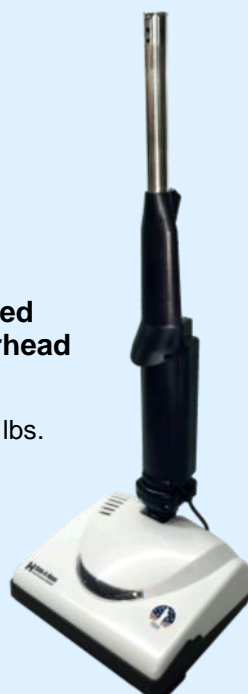
Shipping Wt.: 2 lbs.



### Electric Handheld Power Brush

**9365**

Shipping Wt.: 2 lbs.



### Hide-A-Hose Battery-Powered CX1000 Powerhead

**9965**

Shipping Wt.: 11 lbs.



### VacuBumper for Electric Powerheads

**9939**

Shipping Wt.: 2 lbs.

*Shipping weights are rounded up to the nearest pound.*

## Deluxe Hoses (Low-Voltage With On/Off Switch)



### TurboGrip Hose

Features a TurboGrip handle, 360° swivel, fingertip on/off control switch, swivel air relief valve, and a wire hose rack. Available with or without a hose sock installed.

Shipping Wt.: 8 lbs.

#### Universal Style Hose

<b>7348-30-NL</b>	30' Hose
<b>7348-30-HS-NL</b>	30' Hose with Sock
<b>7348-35-NL</b>	35' Hose
<b>7348-35-HS-NL</b>	35' Hose with Sock



Universal Hose  
Metal Band-Style  
Hose End



### e-Z Grip Hose

Features an e-Z grip handle, 360° swivel, fingertip on/off control switch, easy-slide air relief valve, and a wire hose rack. Available with or without a hose sock installed.

Shipping Wt.: 8 lbs.

#### Universal Style Hose

<b>8872-30-GY</b>	30' Hose
<b>8872-30-GY-HS</b>	30' Hose with Sock
<b>8872-35-GY</b>	35' Hose
<b>8872-35-GY-HS</b>	35' Hose with Sock



Universal Hose  
Metal Band-Style  
Hose End

## Electric Hoses (120V With On/Off Switch)



### Electric Hose

Features a gas-pump style handle, 360° swivel, 3-position switch to control low-voltage, 120V on/off, swivel air relief valve and wire hose rack. Available with or without a hose sock installed.

Shipping Wt.: 12 lbs.

#### Direct Connect Style Hose

<b>7978-NL</b>	30' Hose
<b>7978-HS-NL</b>	30' Hose with Sock
<b>7978-35-NL</b>	35' Hose
<b>7978-35-HS-NL</b>	35' Hose with Sock

#### Universal Style Hose

<b>7977-NL</b>	30' Hose
<b>7977-HS-NL</b>	30' Hose with Sock
<b>7977-35-NL</b>	35' Hose
<b>7977-35-HS-NL</b>	35' Hose with Sock



Direct Connect Hose  
with 120V Pin End and  
Low-Voltage Ring



Universal Electric Hose  
with 120V Pigtail (6')  
and Low-Voltage Ring



### SpiralElectric Hose

Features a gas-pump style handle, 120V on/off only (no separate low-voltage), swivel air relief valve and wire hose rack.

Shipping Wt.: 11 lbs.

#### Direct Connect Style Hose

<b>8189-B</b>	30' Hose
---------------	----------

Shipping weights are rounded up to the nearest pound.



## Standard Hoses (Straight Air Without On/Off Switch)

*Fits most style inlet valves and includes button-lock and swivel air relief valve. No on/off switch.*



### Ultralite Hose

**6453-30-G** 30' Hose  
**6453-35-G** 35' Hose

Shipping Wt.: 7 lbs.



### Crushproof Hose

**5150-30-G** 30' Hose  
**5150-35-G** 35' Hose

Shipping Wt.: 8 lbs.

## Hose Socks and Hose Accessories



### Standard Hose Sock, Gray with Installation Tube

**7347-GNL** for 30' Hose  
**7347-35-GNL** for 35' Hose

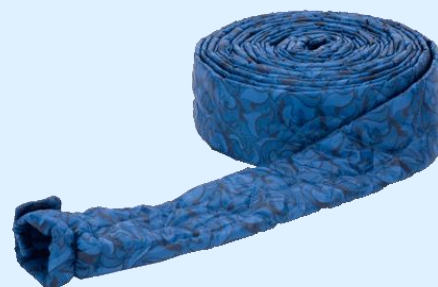
Shipping Wt.: 1 lbs.



### Zipper Hose Sock, Platinum

**9045** for 30' Hose  
**9045-35** for 35' Hose

Shipping Wt.: 1 lbs.



### Zipper Hose Sock, Blue

**9046** for 30' Hose  
**9046-35** for 35' Hose

Shipping Wt.: 1 lbs.



### Nylon Hose Carrier with Velcro Fastener

**8537**

Shipping Wt.: 1 lbs.

*Shipping weights are rounded up to the nearest pound.*

## VROOM, SPOT and WallyFlex



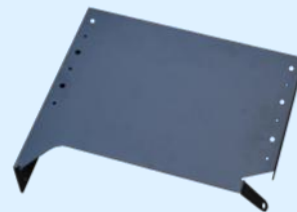
**Vroom 18**  
**9215**

Fits 18" or larger base cabinets with up to an 18' hose reach  
Shipping Wt.: 13 lbs.



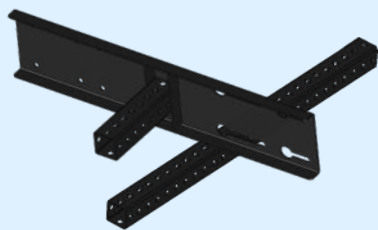
**Vroom 24**  
**9220**

Fits 22" or larger base cabinets with up to a 24' hose reach and comes with an adjustable plastic wand & floor/rug tool  
Shipping Wt.: 13 lbs.



**Universal Vroom Bracket**  
**9420**

Shipping Wt.: 17 lbs.



**Vroom Garage Ceiling Bracket**  
**9547**

Shipping Wt.: 10 lbs.



**Vroom Universal Deluxe Accessory Kit**  
**9430**

Shipping Wt.: 10 lbs.



**Vroom Attachment Set**  
**9604**

Shipping Wt.: 10 lbs.

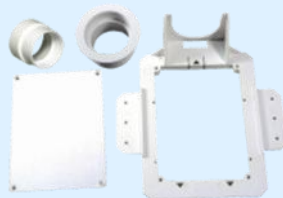


### Spot

Includes a valve, door, hose assembly and dusting brush

**SPOT-15-W** White  
**SPOT-15-A** Almond

Shipping Wt.: 4 lbs.



**Spot Rough-in Kit**  
Includes a frame, mud cover and pipe fitting  
**SP3000R**

Shipping Wt.: 1 lbs.



**Spot Retrofit Hose Lock Assembly**  
**9754**

Shipping Wt.: 1 lbs.



**WallyFlex External Mount with Stretch Hose**  
**9545**

Shipping Wt.: 4 lbs.

Shipping weights are rounded up to the nearest pound.

## Hide-A-Hose One-Valve Installation Kits

Kits include: Valve, Rough-in Kit, 90° Hide-A-Hose Elbows (4), 45° Hide-A-Hose Elbows (3), 90° Sweep Tee (1), 90° Sweep Elbow (3), 45° Sweep Elbow (2), Stop Couplings (7), Quick Clips (5), Pipe Straps (4), Reducer Coupling (1), Wire Nuts (2) and 100' Wire.



### One-Valve Kit with Hose and Handle

- 8971-30RF-W** White (30' Hose)
- 8971-30RF-A** Almond (30' Hose)
- 8971-40RF-W** White (40' Hose)
- 8971-40RF-A** Almond (40' Hose)
- 8971-50RF-W** White (50' Hose)
- 8971-50RF-A** Almond (50' Hose)

Shipping Wt.: 26 lbs.



### One-Valve Kit with Hose (no Handle)

- 8971-30-W** White (30' Hose)
- 8971-30-A** Almond (30' Hose)
- 8971-40-W** White (40' Hose)
- 8971-40-A** Almond (40' Hose)
- 8971-50-W** White (50' Hose)
- 8971-50-A** Almond (50' Hose)

Shipping Wt.: 25 lbs.



### One-Valve Kit (No Hose or Handle)

- 8971-W** White
- 8971-A** Almond
- 8971-NV** No Valve ▼

Shipping Wt.: 19 lbs.



## Hide-A-Hose Two-Valve Installation Kits

Kits include: Valve(2), Rough-in Kit (2), 90° Hide-A-Hose Elbows (8), 45° Hide-A-Hose Elbows (6), 90° Sweep Tee (2), 90° Sweep Elbow (6), 45° Sweep Elbow (4), Stop Couplings (14), Quick Clips (10), Pipe Straps (8), Reducer Coupling (2), Wire Nuts (4) and 200' Wire.



### Two-Valve Kit with Hoses and Handle

- 8972-30RF-W** White (30' Hose)
- 8972-30RF-A** Almond (30' Hose)
- 8972-40RF-W** White (40' Hose)
- 8972-40RF-A** Almond (40' Hose)
- 8972-50RF-W** White (50' Hose)
- 8972-50RF-A** Almond (50' Hose)

Shipping Wt.: 34 lbs.



### Two-Valve Kit with Hoses (No Handle)

- 8972-30-W** White (30' Hose)
- 8972-30-A** Almond (30' Hose)
- 8972-40-W** White (40' Hose)
- 8972-40-A** Almond (40' Hose)
- 8972-50-W** White (50' Hose)
- 8972-50-A** Almond (50' Hose)

Shipping Wt.: 31 lbs.



### Two-Valve Kit (No Hose or Handle)

- 8972-W** White
- 8972-A** Almond
- 8972-NV** No Valves ▼

Shipping Wt.: 19 lbs.



Shipping weights are rounded up to the nearest pound.



## Hide-A-Hose Installation Components

### Valve Trim Kit

**HS5000W** White  
**HS5000A** Almond

Ctn. Qty.: 12  
Ctn. Wt.: 24 lbs.



### Pipe Fitting for Valve Rough-In

for 5000 Series Valves  
**HS5000R-P**

Shipping Wt.: 1 lbs.



### Frame for Valve Rough-In

for 5000 Series Valves  
**HS5000R-F**

Shipping Wt.: 1 lbs.



### Mud Cover for Rough-In

for 5000 Series Valves  
**HS5000R-MP**

Shipping Wt.: 1 lbs.



### Valve Cover Plate

for 5000 Series Valves  
**HS500050**

Shipping Wt.: 1 lbs.



### Rough-In Kit

for 5000 Series Valves  
**HS5000R**

Ctn. Qty.: 12  
Ctn. Wt.: 6 lbs.



### 90° Elbow

**HS202140**

Ctn. Qty.: 24  
Ctn. Wt.: 12 lbs.



### 45° Elbow

**HS202141**

Ctn. Qty.: 24  
Ctn. Wt.: 6 lbs.



### 22.5° Elbow

**HS202142**

Ctn. Qty.: 24  
Ctn. Wt.: 3 lbs.

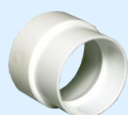


### Reducer Coupling

(install at back end of hose run tubing)

**5532W**

Ctn. Qty.: 135  
Ctn. Wt.: 3 lbs.



### Adapter Threaded 1-1/4" Swivel

**HS502117**

Shipping Wt.: 1 lbs.



### Hide-A-Hose Swivel Cuff 1-1/4"

**HS502119**

Shipping Wt.: 1 lbs.



### Hose Cuff 1-1/4" Swivel

**9605-G** Gray  
**9605-B** Black

Shipping Wt.: 1 lbs.



### Original Valve Conversion Kit

for 3000 or 4000 Series Valves

**HS300051** Almond  
**HS300052** White

Shipping Wt.: 1 lbs.



### Stand-Alone Mounting Kit

for 3000 or 4000 Series Valves  
**HS300053**

Shipping Wt.: 2 lbs.



### Replacement Door

for 3000 Series Valve

**HS3000W-D** White  
**HS3000A-D** Almond  
**HS3000B-D** Black

Shipping Wt.: 1 lbs.

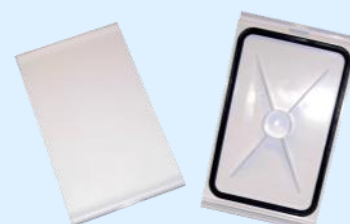


### Replacement Door

for 4000 Series Valve

**HS4000W-D** White  
**HS4000A-D** Almond  
**HS4000B-D** Black

Shipping Wt.: 1 lbs.



### Switch Assembly

**HS3000-switch**

Shipping Wt.: 1 lbs.



### Plug for Hose Assembly

**HS202132**

Shipping Wt.: 1 lbs.



Shipping weights are rounded up to the nearest pound.



## Hide-A-Hose Hoses, Handles and Hose Socks



### Hose Kit with Hose Sock and Mini Cuff

**HS500103** 30'  
**HS500104** 40'  
**HS500105** 50'

Shipping Wt.: 8 lbs.



### Rapid-Flex Hose With Mini Cuff

**HS402153** 30'  
**HS402154** 40'  
**HS402155** 50'

Shipping Wt.: 6 lbs.



### Hide-A-Hose Hose Sock Replacement

**HS502103** 30'  
**HS502104** 40'  
**HS502105** 50'

Shipping Wt.: 2 lbs.



### Hide-A-Hose Mini Cuff Replacement

*(use as a repair kit for all mini cuff hoses)*

**HS500120**

Shipping Wt.: 1 lbs.



### RF Ready-Grip Handle with Sender Only for 915mh

**HS302182**

Shipping Wt.: 2 lbs.



### Ready-Grip Handle without RF

**HS302180**

Shipping Wt.: 2 lbs.



### RF Ready-Grip Handle Kit for 915mh

**HS302181**

Shipping Wt.: 3 lbs.



### RF Repeater Kit (old style) for LV11

**HS502120**

Shipping Wt.: 1 lbs.



### RF Repeater Kit for 915MH

**HS502123**

Shipping Wt.: 1 lbs.



### Handle Adapter for Hide-A-Hose Gas-Pump Handles

**HW420110**

Shipping Wt.: 1 lbs.



### 1-1/4" Adapter

*Connects attachments to Hide-A-Hose without using handle.*

**9811**

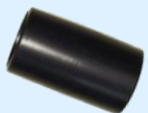
Shipping Wt.: 1 lbs.



### RF Handle with RF Sender Only for LV11

**HS302137**

Shipping Wt.: 2 lbs.



### Handle Coupler

**HS502190**

Shipping Wt.: 1 lbs.

*Shipping weights are rounded up to the nearest pound.*

## Hide-A-Hose Demonstration Components



**90° Clear Elbow**  
*For Demo Only*  
**HS202143**

Shipping Wt.: 1 lbs.



**2" OD Clear Tubing**  
*For Demo Only*  
**6928-CLEAR**

Shipping Wt.: 1 lbs.



**Stop Coupling**  
*For Demo Only*  
**5529-CLEAR**

Shipping Wt.: 1 lbs.



**30' Red Hose Sock**  
*For Demo Only*  
**7347-R**

Shipping Wt.: 1 lbs.



**30' Standard Hide-A-Hose Demo Kit**  
*Includes: Three 90° Elbows (white),  
30' Hose Assembly, RF Handle Kit,  
Valve Trim Kit and Valve Rough-In Kit.*  
**HS302000**

Shipping Wt.: 15 lbs.



**30' Clear Hide-A-Hose Demo Kit**  
*Includes: Three 90° Elbows (clear),  
30' Hose Assembly, RF Handle Kit,  
Valve Trim Kit and Valve Rough-In Kit.*  
**HS302001**

Shipping Wt.: 15 lbs.

*Shipping weights are rounded up to the nearest pound.*

## Attachments

**12" Turn & Clean Brush**

**9502-G** Gray  
**9502-C** Charcoal  
**9502-B** Black

Shipping Wt.: 1 lbs.



**Turn & Clean  
 Carpet Attachment**  
*(snaps onto underside  
 of 9502)*

**9502-01**

Shipping Wt.: 1 lbs.



**12" Premium  
 Bare Floor Brush**

**8616-GNL** Gray  
**8616-C** Charcoal  
**8616-B** Black

Shipping Wt.: 1 lbs.

**12" Premium Rug Tool**

**8620-GNL** Gray  
**8620-C** Charcoal  
**8620-B** Black

Shipping Wt.: 1 lbs.

**Premium  
Dusting Brush**

**8622-G** Gray  
**8622-C** Charcoal  
**8620-B** Black

Shipping Wt.: 1 lbs.

**Premium  
Crevice Tool**

**8615-G** Gray  
**8615-C** Charcoal  
**8615-B** Black

Shipping Wt.: 1 lbs.

**Premium  
Upholstery Tool**

**8625-G** Gray  
**8625-C** Charcoal  
**8625-B** Black

Shipping Wt.: 1 lbs.

**14" Bare Floor Brush  
with Wheels**

**8183-GNL** Gray

Shipping Wt.: 1 lbs.

**10" Bare Floor Brush**

**1137-G** Gray  
**1137-B** Black

Shipping Wt.: 1 lbs.

**Standard  
Dusting Brush**

**1142-G** Gray  
**1142-B** Black

Shipping Wt.: 1 lbs.

**Standard  
Crevice Nozzle**

**1141-G** Gray  
**1141-B** Black

Shipping Wt.: 1 lbs.

**Fabric Brush with  
Bristles**

**7031-G** Gray  
**7031-B** Black

Shipping Wt.: 1 lbs.

**ZipBroom Combo Tool**  
(attachment only)

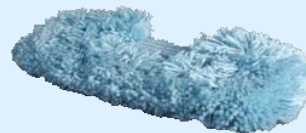
**7864-B**

Shipping Wt.: 1 lbs.

**Dust Mop Tool**

**8049**

Shipping Wt.: 1 lbs.

**Dust Mop Head  
Replacement**

**8049-01**

Shipping Wt.: 1 lbs.

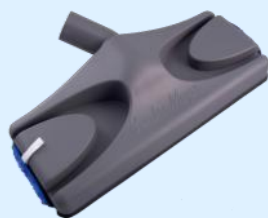
**Pet Hair & Lint Brush**

**9741**

Shipping Wt.: 1 lbs.

Shipping weights are rounded up to the nearest pound.

## Attachments



**Centra-Mop  
Floor Attachment**  
**9008**

Shipping Wt.: 1 lbs.



**Centra-Mop  
Replacement Pad**  
**9008-01**

Shipping Wt.: 1 lbs.



**Microfiber Dust Mop  
Tool (green)**  
**9589**

Shipping Wt.: 1 lbs.



**Microfiber Fringe Pad  
Replacement (green)**  
**9589-01**

Shipping Wt.: 1 lbs.



**Spider Fighter**  
**9820**

Shipping Wt.: 1 lbs.



**Up & Over Tool**  
**8854**

Shipping Wt.: 1 lbs.



**Flexible Crevice Tool**  
**8689**

Shipping Wt.: 1 lbs.



**Dashboard Dusting Tool**  
**8690**

Shipping Wt.: 1 lbs.



**Mini Attachment Set**  
**8311**

Shipping Wt.: 1 lbs.



**36" Exten-Vac  
Crevice Tool**  
**4100**

Shipping Wt.: 1 lbs.



**14" Commercial  
Bare Floor Brush**  
**7335**

Shipping Wt.: 1 lbs.



**Rake Tool  
for Shag Carpet**  
**8068-G**

Shipping Wt.: 1 lbs.



**Curry Comb  
Attachment**  
**8597**

Shipping Wt.: 1 lbs.



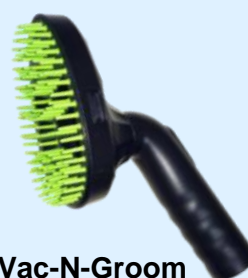
**Grooming Brush  
Attachment**  
**8598**

Shipping Wt.: 1 lbs.



**Pin Comb  
Attachment**  
**8599**

Shipping Wt.: 1



**Vac-N-Groom  
Brush**  
**9897**

Shipping Wt.: 1 lbs.



**Pet Set**  
*includes #9897  
and #9741*  
**9913**

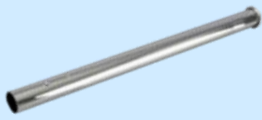
Shipping Wt.: 1 lbs.

*Shipping weights are rounded up to the nearest pound.*

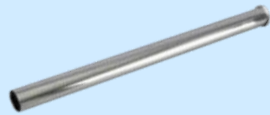


## H-P Button-Lock Wands

The button-lock on H-P wands is located about 1/2" from top of wand, and is compatible with TurboGrip, e-Z Grip, Ultralite and crushproof hose handles. Shipping Wt. Each: 1 lbs.



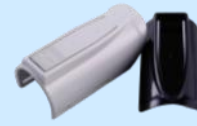
**Button-Locking  
Wand, Lower**  
**6770**



**Button-Locking  
Wand, Upper**  
**6771**



**Adjustable Wand**  
**6791-G** Gray\*  
**6791-B** Black\*  
\*refers to clip color



**Replacement  
Button-Down Clip**  
**8553-G** (for 6791-G)  
**8553-B** (for 6791-B)



**Button-Down  
Repair Kit**  
**8775-B**

## OEM Button-Lock Wands

The button-lock on OEM wands is located about 1/4" from top of wand, and is compatible with Hide-A-Hose and most Gas-Pump/Pistol Grip hose handles. Shipping Wt. Each: 1 lbs.



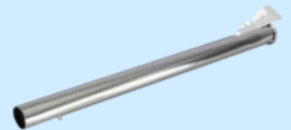
**Adjustable Wand**  
for use with electric  
& Hide-A-Hose kits  
**6791-OEM-G** Gray  
**6791-OEM-B** Black



**Prestige  
Adjustable  
Wand**  
**8300-01**



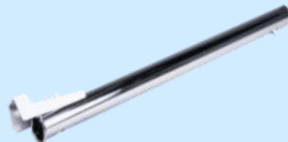
**Electric  
Upper Wand**  
with cord channel  
**7149**



**Electric Upper  
Wand** with cord  
management  
**7196**



**EG1400 &  
Electroglide  
Lower Wand**  
with easy release  
**9417**



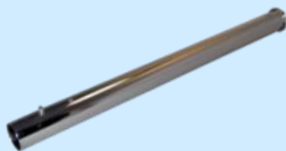
**Electric Upper  
Wand** with cord  
management  
**7922** Gray  
**7922-B** Black



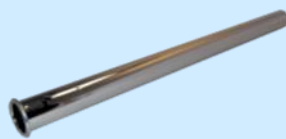
**Electric Lower  
Wand** with cord  
channel  
**8258**



**EG1400 & Electroglide  
Adjustable Wand**  
**7924**



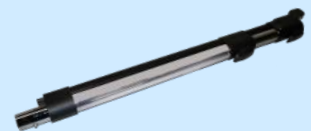
**Chrome Electric  
Upper Wand** with  
standard OEM button  
**8288**



**Electric Lower  
Wand** with standard  
OEM button  
**8289**



**Acclaim  
Adjustable Wand**  
for use only with electric  
Acclaim12 & Acclaim15  
powerheads  
**9845-G**

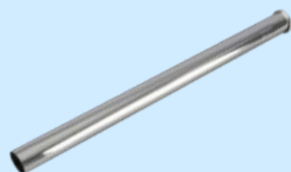


**Stainless Steel  
Edge Integrated  
Wand**  
**9305-G**

Shipping weights are rounded up to the nearest pound.

## Friction Fit Wands

No button-lock, just insert and twist. Shipping Wt. Each: 1 lbs.



**Chrome Friction  
Fit Wand Section**  
**7632**



**Plastic Friction  
Fit Wand**  
**4978-G** Gray  
**4978-B** Black



**38" Adjustable  
Plastic Wand**  
**9091-G** Gray  
**9091-B** Black



**34" Adjustable  
Plastic Wand**  
**9095-G** Gray  
**9095-B** Black



**Adjustable  
Aluminum Wand**  
**9099**

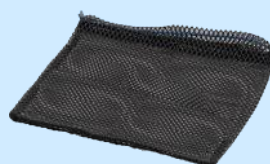
## Attachment Caddies, Racks and Hangers



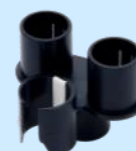
**VacPac Bag  
Caddy**  
**8725-01**  
Shipping Wt.: 1 lbs.



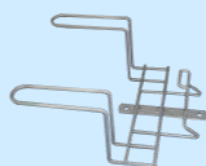
**Black Vinyl Bag  
Caddy**  
**7824-NL**  
Shipping Wt.: 1 lbs.



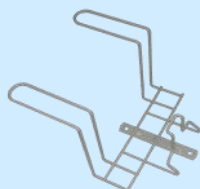
**Mesh Bag Caddy**  
**6481-01**  
Shipping Wt.: 1 lbs.



**Tool Caddy Clip-on** fits on  
2-pc wand and holds 3 tools  
**7724-G** Gray  
**7724-B** Black  
Shipping Wt.: 1 lbs.



**Wire Hose Rack**  
**6524-G**  
Shipping Wt.: 1 lbs.



**Large Wire Hose  
Rack for 35'+ Hoses**  
**9218-G**  
Shipping Wt.: 1 lbs.



**Economy Wire  
Hose Rack**  
**6599-G**  
Shipping Wt.: 1 lbs.



**Wand Wall Hanger**  
**8855** Black  
**8855-G** Gray  
Shipping Wt.: 1 lbs.

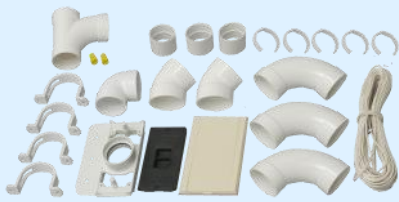


**VacPac Wire  
Holder**  
**9274**  
Shipping Wt.: 1 lbs.

Shipping weights are rounded up to the nearest pound.

## Universal Inlet Valve Installation Kits

All kits include mounting plates, fittings and low-voltage wire (18-2 gauge). Kits are available with or without valves (photos show kits with valves).



### 1 Valve Kit

- 5591** Ivory
- 5591W** White
- 5591A** Almond
- 5591B** Black
- 5591-NV** No Valve

Shipping Wt.: 4 lbs.



### 3 Valve Kit

- 5593** Ivory
- 5593W** White
- 5593A** Almond
- 5593B** Black
- 5593-NV** No Valves

Shipping Wt.: 8 lbs.



### 4 Valve Kit

- 8438** Ivory
- 8438W** White
- 8438A** Almond
- 8438B** Black
- 8438-NV** No Valves

Shipping Wt.: 11 lbs.



### 5 Valve Kit

- 7998** Ivory
- 7998W** White
- 7998A** Almond
- 7998B** Black
- 7998-NV** No Valves

Shipping Wt.: 13 lbs.

## Electravalve Direct Connect Installation Kits

Kits include mounting plates, E-box, fittings and low-voltage wire (18-2 gauge). Kits are available with or without valves (photos show kits with valves).



### 1 Valve Kit

- 5591W-EV** White
- 5591A-EV** Almond
- 5591-ENV** No Valve

Shipping Wt.: 4 lbs.



### 3 Valve Kit

- 5593W-EV** White
- 5593A-EV** Almond
- 5593-ENV** No Valves

Shipping Wt.: 8 lbs.

### 4 Valve Kit

- 8438W-EV** White
- 8438A-EV** Almond
- 8438-ENV** No Valves

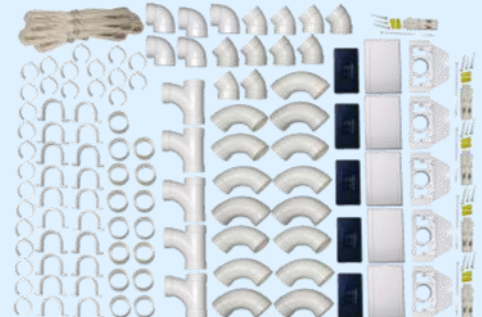
Shipping Wt.: 11 lbs.



### 5 Valve Kit

- 7998W-EV** White
- 7998A-EV** Almond
- 7998-ENV** No Valves

Shipping Wt.: 14 lbs.



Shipping weights are rounded up to the nearest pound.

## Universal Valve Components

Valves are semi-automatic – system activates when hose is inserted.



### Universal Inlet Valve

**5590** Ivory  
**5590A** Almond  
**5590W** White  
**5590BK-NL** Black

Ctn. Qty.: 32  
 Ctn. Wt.: 8 lbs.



### Side-Opening Inlet Valve

**9481-01** White  
 Shipping Wt.: 1 lbs.

## Universal Cover & Trim Plates

Cover plates are intended for rough-ins. Trim plates can be placed behind inlet valves to cover oversized holes in drywall.



### Cover Plate

**5585** Ivory  
**5585A** Almond  
**5585W** White

Ctn. Qty.: 120  
 Ctn. Wt.: 9 lbs.

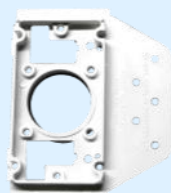


### Trim Plate

**5589** Ivory  
**5589A** Almond  
**5589W** White  
**5589BK** Black

Ctn. Qty.: 150  
 Ctn. Wt.: 2 lbs.

## Accessories & Fittings for Universal Valves



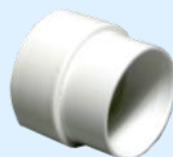
### Mounting Plate with Plastic Flange for 5506 elbow

**5568W**  
 Ctn. Qty.: 75  
 Ctn. Wt.: 9 lbs.



### Plaster Guard

**5543**  
 Ctn. Qty.: 100  
 Ctn. Wt.: 6 lbs.



### Valve Stem Extension 2"

**5541W**  
 Ctn. Qty.: 50  
 Ctn. Wt.: 2 lbs.



### 90° Short Elbow

**5506W**  
 Ctn. Qty.: 115  
 Ctn. Wt.: 12 lbs.

## VEX Universal Inlet Valves



### R-VEX, Rectangular Door

**8480W** White  
**8480A** Almond

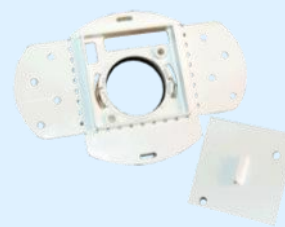
Ctn. Qty.: 24  
 Ctn. Wt.: 6 lbs.



### VEX-S, Square Door

**8481W** White  
**8481A** Almond

Ctn. Qty.: 24  
 Ctn. Wt.: 6 lbs.



### VEX Universal Mounting Plate

**8482**  
 Ctn. Qty.: 75  
 Ctn. Wt.: 6 lbs.

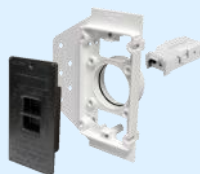
## Electravalve Direct Connect Inlet Valves & Rough-in Kits



### Electravalve valve only

**9895A** Almond  
**9895W** White

Ctn. Qty.: 32  
 Ctn. Wt.: 6 lbs.



### Electravalve Rough-in Kit

Kit includes mounting plate, plaster guard & E-box (wire not included, use 12 or 14 gauge)

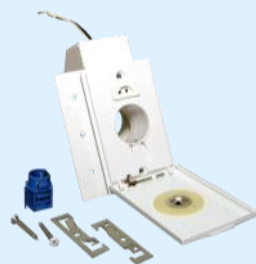
**9895-01**

Ctn. Qty.: 16  
 Ctn. Wt.: 11 lbs.

Shipping weights are rounded up to the nearest pound.



## SuperValve Inlet Valves



**SuperValve with Full Door**  
**2050-01** White  
**2050-11** Almond  
 Ctn. Qty.: 10  
 Ctn. Wt.: 7 lbs.



**SuperValve with Square Door**  
**1750-01** White  
**1750-11** Almond  
 Ctn. Qty.: 10  
 Ctn. Wt.: 7 lbs.



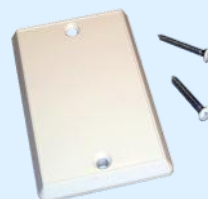
**SuperValve with Side-Opening Door**  
**9482-01** White  
 Shipping Wt.: 2 lbs.

## SuperValve Accessories

*Cover plates are intended for rough-ins. Trim plates can be placed behind inlet valves to cover oversized holes in drywall.*



**SuperValve Trim Plate**  
**1600-1** White  
**1600-11** Almond  
 Ctn. Qty.: 80  
 Ctn. Wt.: 7 lbs.



**SuperValve Cover Plate**  
**8078-01** White  
 Ctn. Qty.: 120  
 Ctn. Wt.: 7 lbs.



**Electrical Connector**  
**5176-00**  
 Shipping Wt.: 1 lbs.

## Utility Valves



**Automatic Utility Valve**  
**3990W-2**  
 Shipping Wt.: 1 lbs.

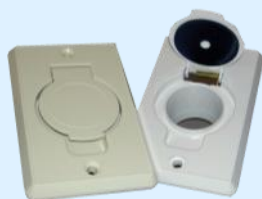


**Utility Valve with Pin Jacks**  
**5586W**  
 Shipping Wt.: 1 lbs.

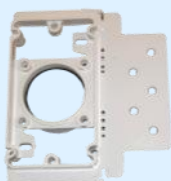


**4" Post Clamp**  
 for 3990W-2  
**1211-03**  
 Shipping Wt.: 1 lbs.

## Round Door Valves



**Round Door Valve**  
**SV-8016** White  
**SV-8020** Almond  
 Shipping Wt.: 1 lbs.



**Mounting Plate**  
**SV-8001**  
 Shipping Wt.: 1 lbs.



**Cover Plate**  
**SV-8012** White  
**SV-8015** Almond  
 Shipping Wt.: 1 lbs.

*Shipping weights are rounded up to the nearest pound.*

## Automatic Dustpans, Trim Plates and Installation Components

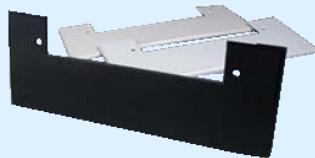
*VacPan®*, *CanSweep®* and *VacPort™* Automatic Dustpans are usually mounted in the toe-kick of cabinets.



### VacPan

**7710A** Almond  
**7710B** Black  
**7710W** White  
**7710S** Silver

Ctn. Qty.: 12  
 Ctn. Wt.: 10 lbs.



### Trim Plate for VacPan

**7739A** Almond  
**7739B** Black  
**7739W** White

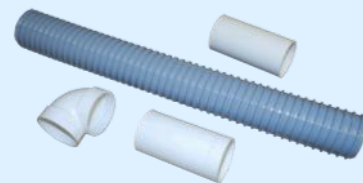
Ctn. Qty.: 50  
 Ctn. Wt.: 6 lbs.



### VacPan Stainless Face Plate

**8583**

Shipping Wt.: 1 lbs.



### VacPan Installation Kit

**7994**

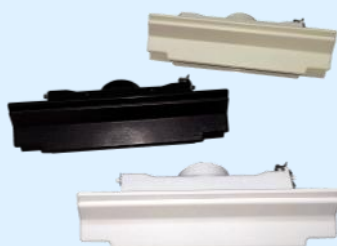
Shipping Wt.: 2 lbs.



### VacPan Rough-In Kit

**9098**

Shipping Wt.: 2 lbs.



### CanSweep

**9916W** White  
**9916A** Almond  
**9916B** Black

Ctn. Qty.: 20  
 Ctn. Wt.: 12 lbs.



### Trim Plate for CanSweep

**9917W** White  
**9917A** Almond  
**9917B** Black

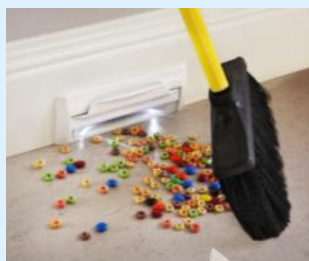
Ctn. Qty.: 25  
 Ctn. Wt.: 3 lbs.



### VacPort

**9833A** Almond  
**9833B** Black  
**9833W** White

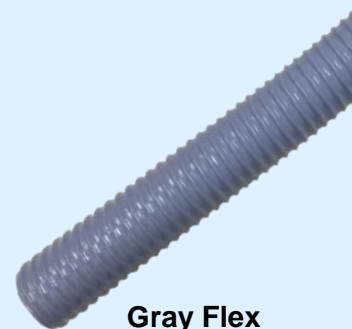
Shipping Wt.: 1 lbs.



### VacPort with LED Lights

**9834A** Almond  
**9834B** Black  
**9834W** White

Shipping Wt.: 1 lbs.



### Gray Flex Hose, 50'

**7996**

Shipping Wt.: 10 lbs.

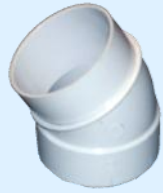
*Shipping weights are rounded up to the nearest pound.*

## Elbows, Ys and Ts



**30° Elbow**  
**2030W**

Ctn. Qty.: 75  
Ctn. Wt.: 10 lbs.



**30° Spigot Elbow**  
**2032W**

Ctn. Qty.: 125  
Ctn. Wt.: 11 lbs.



**38° Elbow**  
*common stairway angle*  
**2038W**

Ctn. Qty.: 125  
Ctn. Wt.: 11 lbs.



**45° Elbow**  
**5517W**

Ctn. Qty.: 80  
Ctn. Wt.: 11 lbs.



**45° Spigot Elbow**  
**5518W**

Ctn. Qty.: 80  
Ctn. Wt.: 9 lbs.



**90° TY**  
**5501W**

Ctn. Qty.: 55  
Ctn. Wt.: 10 lbs.



**45° Y**  
**5525W**

Ctn. Qty.: 60  
Ctn. Wt.: 9 lbs.



**90° Long Elbow**  
**5510W**

Ctn. Qty.: 75  
Ctn. Wt.: 20 lbs.



**90° Long Spigot Elbow**  
**5511W**

Ctn. Qty.: 50  
Ctn. Wt.: 19 lbs.



**90° Short Elbow**  
*for 2x4 wall*  
**5506W**

Ctn. Qty.: 90  
Ctn. Wt.: 10 lbs.



**Short Tee**  
**5502W**

Ctn. Qty.: 90  
Ctn. Wt.: 20 lbs.



**90° Short Elbow**  
*for 2x4 or 2x3 wall*  
**SV-8052**

Ctn. Qty.: 115  
Ctn. Wt.: 10 lbs.



**90° Short Spigot**  
**5507W**

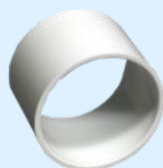
Ctn. Qty.: 90  
Ctn. Wt.: 10 lbs.

## Reducers and Couplings



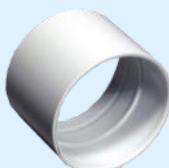
**Spigot Adapter** *used to join fittings, exterior stop*  
**5527W**

Ctn. Qty.: 125  
Ctn. Wt.: 5 lbs.



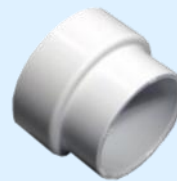
**Slip Coupling**  
*no interior stop*  
**5528W**

Ctn. Qty.: 175  
Ctn. Wt.: 11 lbs.



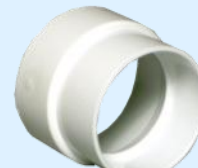
**Stop Coupling**  
*interior stop*  
**5529W**

Ctn. Qty.: 175  
Ctn. Wt.: 11 lbs.



**Inlet Reducer**  
**5531W**

Ctn. Qty.: 90  
Ctn. Wt.: 6 lbs.



**Reducer Coupling**  
*2" x 1-13/16"*  
**5532W**

Ctn. Qty.: 135  
Ctn. Wt.: 3 lbs.



**Valve Adapter**  
**8312W**

Ctn. Qty.: 45  
Ctn. Wt.: 3 lbs.

*Shipping weights are rounded up to the nearest pound.*

## Mufflers and Vent Caps



**10.5" Square  
White Vaculiner  
Muffler**  
**4535W**

Ctn. Qty.: 12  
Ctn. Wt.: 11 lbs.



**12" Round  
H-P Muffler,  
Black**  
**8080**

Ctn. Qty.: 1  
Ctn. Wt.: 2 lbs.



**2" Vent Cap,  
White**  
*for exterior  
venting*  
**3030-1**

Ctn. Qty.: 40  
Ctn. Wt.: 6 lbs.



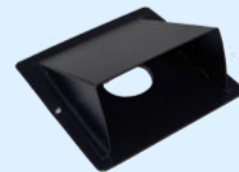
**2" Vent Cap,  
White**  
*for high-  
temperature  
exterior venting*  
**3030-1-ABS**

Ctn. Qty.: 40  
Ctn. Wt.: 6 lbs.



**6" Vent Cap,  
White** *dryer  
type for exterior  
venting*  
**5540W**

Ctn. Qty.: 25  
Ctn. Wt.: 6 lbs.



**Exhaust Vent**  
**9015**

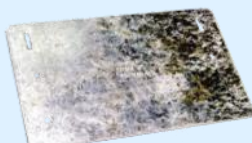
Shipping Wt.:  
2 lbs.

## Installation and Service Items



**Nail Guard**  
**7100**

Ctn. Qty.: 100  
Ctn. Wt.: 16 lbs.



**5" x 8" Nail  
Guard**  
**8437**

Ctn. Qty.: 50  
Ctn. Wt.: 34 lbs.



**Wire Ties**  
**6728** Natural  
**6728-B** Black

Ctn. Qty.: 100  
Ctn. Wt.: 1 lb.



**Vacuum  
Gauge**  
*up to 160 lbs.*  
**1247**

Shipping Wt.:  
1 lbs.



**45° Y Testing  
Fixture**  
*5/8" Orifice*  
**4448**

Shipping Wt.:  
1 lbs.



**Deburring Tool  
for 2" PVC  
Tubing**  
**6787**

Shipping Wt.:  
1 lbs.



**2" PVC Tubing  
Pipe Cutter,  
Hayden**  
**4500**

Shipping Wt.: 2 lbs.



**Replacement Pipe  
Cutter Blades** *for  
4500, pkg. of 5*  
**4501**

Shipping Wt.: 1 lbs.



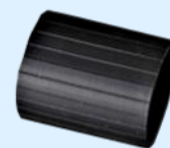
**Fire Stop Kit**  
**9005**

Shipping Wt.: 1 lbs.



**Metal Exhaust &  
Intake Clamp**  
**5156**

Shipping Wt.: 1 lbs.



**Rubber Coupling**  
**1209**

Shipping Wt.: 1 lbs.



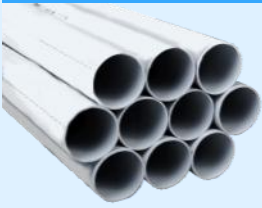
**Flex Connect Central  
Vac Connection Kit**  
**9962**

Shipping Wt.: 1 lbs.

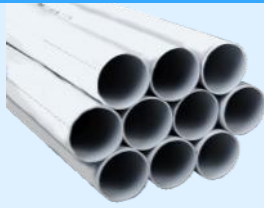
Shipping weights are rounded up to the nearest pound.



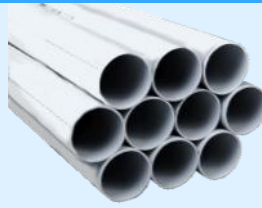
## PVC Tubing and Tubing Accessories



**2" PVC Tubing,  
8' Lengths**  
*ships 80' bundle  
or 3200' skid*  
**6928W**



**2" PVC Tubing,  
10' Lengths**  
*ships 100' bundle  
or 4000' skid*  
**6928W-10**



**2" PVC Tubing,  
5' Lengths**  
*ships 117' carton*  
**6928W-5**



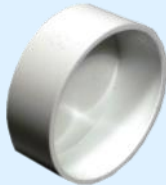
**Tubing Support  
Strap**  
**5545W**  
Ctn. Qty.: 300  
Ctn. Wt.: 4 lbs.



**Metal Tube  
Hanger**  
**7748**  
Ctn. Qty.: 50  
Ctn. Wt.: 4 lbs.



**Quick Clip**  
*low-voltage wire  
holder*  
**5544W**  
Ctn. Qty.: 500  
Ctn. Wt.: 9 lbs.



**Tube Cap**  
**5547W**  
Ctn. Qty.: 250  
Ctn. Wt.: 3 lbs.



**2" Pipe Collar**  
**5549W**  
Ctn. Qty.: 100  
Ctn. Wt.: 3 lbs.



**J-Hook Tubing  
Support**  
**9277** 25 per pack  
Shipping Wt.: 1 lbs.

## Low-Voltage Wire and PVC Adhesive



**Wire No. 18-2,  
100' (30.5 m)  
Hank**  
**5039W**  
Shipping Wt.: 3 lbs.



**Wire No. 18-2,  
500' (152.4 m)  
Reel**  
**2870W**  
Shipping Wt.: 10 lbs.



**20-2 Stranded  
Low-Voltage  
Wire, 1,000' Box**  
**9814W**  
Shipping Wt.: 20 lbs.



**1/4 Pint  
(.12 liter)**  
**5038**  
Ctn. Qty.: 24  
Ctn. Wt.: 9 lbs.



**1/2 Pint  
(.24 liter)**  
**4345**  
Ctn. Qty.: 12  
Ctn. Wt.: 9 lbs.



**Wire No. 18-2,  
30' (30.5 m) Hank**  
**7507W**  
Shipping Wt.: 1 lbs.

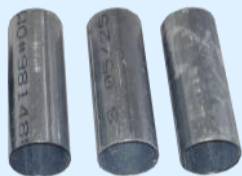
Shipping weights are rounded up to the nearest pound.

## Tubing and Components for Commercial and DB9000 Installations



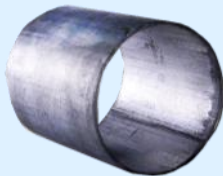
**2" Metal Tubing,  
8' Lengths**  
*Ships 128' bundle*  
**1253**

Ctn. Qty.: 16  
Ctn. Wt.: 150 lbs.



**2" Metal Tubing  
for Fire Walls,  
6" Lengths**  
**7465**

Ctn. Qty.: 100



**Metal Slip  
Coupling**  
**1189**

Ctn. Qty.: 48  
Ctn. Wt.: 11 lbs.



**45° Metal Elbow**  
**1190**

Ctn. Qty.: 48  
Ctn. Wt.: 21 lbs.



**45° Metal Street  
Elbow**  
**1191**

Ctn. Qty.: 48  
Ctn. Wt.: 21 lbs.



**90° Metal Elbow**  
**1192**

Ctn. Qty.: 48  
Ctn. Wt.: 30 lbs.



**90° Metal Street  
Elbow**  
**1193**

Ctn. Qty.: 48  
Ctn. Wt.: 30 lbs.



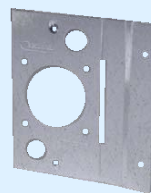
**45° Metal Y**  
**1194**

Ctn. Qty.: 24  
Ctn. Wt.: 18 lbs.



**90° Adapter Elbow**  
*requires gasket # 7048  
and 4 screws # 1118-01*  
**7044**

Ctn. Qty.: 12  
Ctn. Wt.: 5 lbs.



**Metal Mounting  
Plate**  
**5560**

Ctn. Qty.: 12  
Ctn. Wt.: 2 lbs.



**Basic Exhaust Kit**  
2 ea #1192, 3 ea #7465,  
3 ft. Flex-Guard Sleeve,  
4 ea Black Wire Ties, 1 ea  
#9048, 8 ea #4957-01)  
**9049**

Shipping Wt.: 5 lbs.



**Flex-Guard  
Sleeve, 25' Roll**  
**9019-25**

Ctn. Wt.: 2 lbs.



**Wire Ties, Black**  
*keeps 9019 Flex-  
Guard Sleeve in  
place – 100 pack*  
**6728-B**

Shipping Wt.: 2 lbs.



**High-Temperature  
Vent Cap**  
*made of high-temp.  
ABS material*  
**3030-1-ABS**

Ctn. Qty.: 40  
Shipping Wt.: 6 lbs.



**Vent Assembly  
with Metal End**  
*(3030-1-ABS vent with  
metal end; use with  
metal tubing & high-  
temperature exterior  
venting)*  
**9088**

Shipping Wt.: 1 lbs.



**Muffler Assembly  
with Metal Ends**  
**9074**

Shipping Wt.: 3 lbs.



**#10 Self-Drilling  
Screw** *use to  
connect metal fittings  
to metal tubing*  
**4957-01**

Shipping Wt.: 1 lbs.



**High-Temperature  
Silicone, 1 oz.  
Tube**  
**9048**

Shipping Wt.: 1 lbs.



**Pliobond®  
Adhesive, ½ Pint**  
**2862**

Ctn. Qty.: 12  
Ctn. Wt.: 8 lbs.



**Automatic Air  
Relief Valve** *for  
use with DB9000*  
**9056-B**

Shipping Wt.: 1 lbs.

*Shipping weights are rounded up to the nearest pound.*

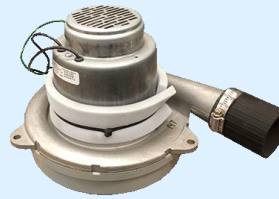
## Replacement Motors



**Model 1300 Motor**  
 Ametek #119913-07,  
 120V  
**8575-01**  
 Shipping Wt.: 6 lbs.



**Model 1700 Motor**  
 Ametek #122469-07,  
 120V  
**9815-01**  
 Shipping Wt.: 6 lbs.



**Model 2300 Motor**  
 Ametek #122432-07,  
 120V  
**9729-01**  
 Shipping Wt.: 12 lbs.



**DB3000 Motor**  
 Ametek #122480-07,  
 120V  
**9933-01**  
 Shipping Wt.: 6 lbs.



**DB5000 Motor**  
 Ametek #122287-07,  
 120V  
**9513-01**  
 Shipping Wt.: 7 lbs.



**DB7000 Motor**  
 Electro Motor #6600-  
 156A, 120V, with carbon  
 capture filter  
**9514-01**  
 Shipping Wt.: 7 lbs.



**DB8000 Motor**  
 Electro Motor #122503-  
 07, 120V, with carbon  
 capture filter  
**9940-01**  
 Shipping Wt.: 7 lbs.



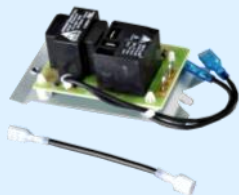
**DB9000 Bottom Motor**  
 Ametek #122100-07, 240V,  
 with carbon capture filter  
**9064-02**  
 Shipping Wt.: 7 lbs.



**DB9000 Top Motor**  
 Ametek #122101-07,  
 240V, with exhaust tube  
 and carbon capture filter  
**9065-02**  
 Shipping Wt.: 7 lbs.

Shipping weights are rounded up to the nearest pound.

## PC Boards, Circuit Protectors, Motor Brushes and VacPan Repair Kit



### PC Board

for Models 1300, 1700,  
2300, DB3000, DB5000,  
DB7000, DB8000  
**7090**

Shipping Wt.: 1 lbs.



### PC Board

for Model DB9000  
**7417-CE**

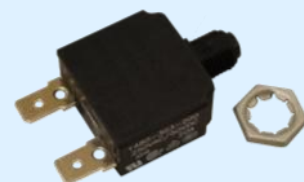
Shipping Wt.: 2 lbs.



### Circuit Protector

**8756-01** 120V, 17 amp  
**8756-02** 240V, 10 amp

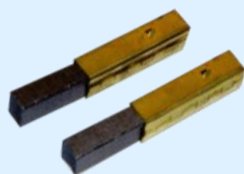
Shipping Wt.: 1 lbs.



### Circuit Protector

for DB7000, DB8000  
**9939** 120V, 20 amp

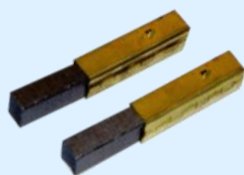
Shipping Wt.: 1 lbs.



### Motor Brush for Model 1300

for H-P #8575-01 &  
Ametek #119913-07  
**8146**

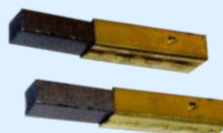
Shipping Wt.: 1 lbs.



### Motor Brush for Model 1700

for H-P #9815-01 &  
Ametek #122469-07  
**9016**

Shipping Wt.: 1 lbs.



### Motor Brushes for DB5000

for H-P #9513-01 &  
Ametek #122287-07  
**9636**

Shipping Wt.: 1 lbs.



### Motor Brushes for DB7000

for H-P #9514-01 &  
ElectroMotor #6600-156A  
**8243**

Shipping Wt.: 1 lbs.



### Motor Brushes for DB9000

for Top Motor: H-P #9065-01 &  
Ametek #122101-07  
for Bottom Motor: H-P #9064-01  
& Ametek #122100-07

**9428**

Shipping Wt.: 1 lbs.

## VacPan Repair Kit



### VacPan Repair Kit

**8056A** Almond  
**8056B** Black  
**8056W** White

Shipping Wt.: 1 lbs.

Shipping weights are rounded up to the nearest pound.



## Dirt Canisters



**Clear DuraCan  
Elite, Short**  
for Models 1300,  
1700 and 2300

**6988-02**

Shipping Wt.: 4



**Black DuraCan  
Elite, Short**  
for Model DB3000

**6988-01**

Shipping Wt.: 4 lbs.



**Black DuraCan  
Elite, Tall**  
for DB5000,  
DB7000, DB8000,  
and DB9000

**8102-02**

Shipping Wt.: 6 lbs.

## Belts and Tornado Cloths



**TurboCat Zoom  
Replacement Belt**

**8439** 3 pack

**8439-01** 1 belt

Shipping Wt.: 1 lbs.



**TurboCat  
Replacement Belt**

**7227-X** 3 pack

**7227-01-X** 1 belt

Shipping Wt.: 1 lbs.



**RugRat Replace-  
ment Belt**

**6323-X** 3 pack

**6323-01-X** 1 belt

Shipping Wt.: 1 lbs.



**Edge & Sterling  
Plus Replace-  
ment Belt**

**9204-01**

Shipping Wt.: 1 lbs.



**Prestige  
Replacement  
Belt**

**8676**

Shipping Wt.: 1 lbs.



**Electroglide  
Replacement Belt**

**7960** 3 pack

**7960-01** 1 belt

Shipping Wt.: 1 lbs.



**EG1200 Replace-  
ment Belt**

**8581** 3 pack

**8581-01** 1 belt

Shipping Wt.: 1 lbs.



**PowerSweep  
Replacement Belt**

**8353** 3 pack

**8353-01** 1 belt

Shipping Wt.: 1 lbs.



**EG1400  
Replacement  
Belt**

**9439-01**

Shipping Wt.: 1 lbs.



**Sterling  
Replacement  
Belt**

**9822-01**

Shipping Wt.: 1 lbs.



**Electric Handheld  
Brush Belt**

**9821-01**

Shipping Wt.: 1 lbs.



**Tornado Cloths,  
Trial Pack**

Pack of 6

**9004-01**

Shipping Wt.: 1 lbs.



**Tornado Cloths,  
Pull-Top Canister**

Pack of 25

**9004**

Shipping Wt.: 2 lbs.



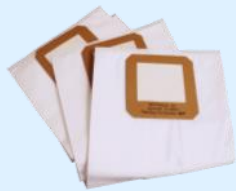
**Tornado Cloth/  
Powerhead  
Maintenance Kit**

**9004-Kit**

Shipping Wt.: 2 lbs.

Shipping weights are rounded up to the nearest pound.

## Replacement Bags



### DB3000 Replacement Bags

**9637** 3 pack

Shipping Wt.: 1 lbs.



### DB5000, DB7000 , DB8000 and DB9000 Replacement Bags (3)

**9520**

Shipping Wt.: 1 lbs.



### Inverted Cloth Filter

**9352-01**

Shipping Wt.: 1 lbs.



### Vroom Garage Vac Replacement Bags (5) with Motor Filter (1 ea)

**Y08-5**

Shipping Wt.: 1 lbs.

## Straight Air Hose Replacement Parts (without on/off switch)



### 1-1/4" Universal Hose Adapter

*fits most valves*

**6933-G** Gray

**6933-B** Black

Shipping Wt.: 1 lbs.



### 1-3/8" Hose Adapter

*fits most valves*

**7067-G** Gray

**7067-B** Black

Shipping Wt.: 1 lbs.



### 1-1/4" Threaded Hose Coupling

*for 5150 & 6453*

**5108-G** Gray

Shipping Wt.: 1 lbs.



### 1-3/8" Threaded Hose Coupling

*for 5150 & 6453*

**5726** Gray

Shipping Wt.: 1 lbs.



### 1-1/4" Threaded Connector End *for 5302-7*

**5119-G** Gray

Shipping Wt.: 1 lbs.



### Suction Control Ring

**7858-01** Gray

**7858-02** Black

Shipping Wt.:  
1 lbs.



### 1-1/4" Button-Locking Hose Handle with Suction Control Ring

*for 5150 & 6453*

**6772-G** Gray

**6772-B** Black

Shipping Wt.: 1 lbs.



### 1-3/8" Button-Locking Hose Handle w/ Suction Control Ring

*for 5150 & 6453*

**7719-G** Gray

**7719-B** Black

Shipping Wt.: 1 lbs.



### Universal Cuff Repair Kit

**9466-G** Gray

**9466-C** Charcoal

Shipping Wt.:  
1 lbs.



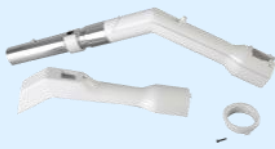
### ZipBroom Hose Repair Kit

**7841-01**

Shipping Wt.: 1 lbs.

Shipping weights are rounded up to the nearest pound.

## TurboGrip Hose Replacement Parts (low-voltage on/off)



### TurboGrip Handle Repair Kit

**7728**

Shipping Wt.: 1 lbs.



### TurboGrip Electrical Repair Kit

*narrow prong position post 9/98*

**7851**

Shipping Wt.: 1 lbs.



### Suction Control Ring

**7858-01**

Shipping Wt.: 1 lbs.



### e-Z Grip Hose Handle Replacement with Switch

**8879**

Shipping Wt.: 2 lbs.



### Hose Button Lock Replacement Kit

*for Turbo Grip and e-Z Grip*

**9047**

Shipping Wt.: 1 lbs.

## 120V Electric Hose Replacement Parts (120V & low-voltage controls)



### Corded Wall End Repair Kit

*for 7977*

**8062**

Shipping Wt.: 1 lbs.

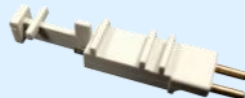


### Direct Connect Wall End Repair Kit

*for 7978*

**8063**

Shipping Wt.: 1 lbs.



### DC Conversion Kit

*(Pigtail to DC)*

**8063-01**

Shipping Wt.: 1 lbs.



### Prestige Valve Wall End Repair Kit

*for Direct Connect*

**8898-DC**

Shipping Wt.: 1 lbs.



### Prestige Valve Wall End Repair Kit

*for Universal*

**8898-UNIV**

Shipping Wt.: 1 lbs.



### Electroglide Gas Pump Handle

**8061** White

**8061-B** Black

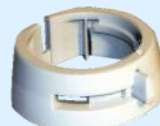
Shipping Wt.: 2 lbs.



### Electroglide Gas Pump Electrical Repair Kit

**5618**

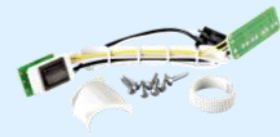
Shipping Wt.: 1 lbs.



### Electroglide Suction Control Ring

**8798-01**

Shipping Wt.: 1 lbs.



### PowerSweep Pistol Grip Electrical Repair Kit

**5632**

Shipping Wt.: 1 lbs.

### Universal Pigtail Conversion Kit

**8062-01** Gray

**8062-01-B** Black

Shipping Wt.: 1 lbs.



### External Edge Wand Cord Replacement

*for 9042-G*

**9312**

Shipping Wt.: 1 lbs.



### Integrated Edge Wand Cord Replacement

*for 9305-G*

**9480**

Shipping Wt.: 1 lbs.



Shipping weights are rounded up to the nearest pound.

## **H-P Products, Inc. Central Vacuums**

**512 W. Gorgas St.  
Louisville, OH 44641  
1-888-281-3705**

**Additional items can be found  
on the Partner Portal at:  
[www.h-pproducts.com/partner](http://www.h-pproducts.com/partner)**